



WELCOME TO THE COIRE NA CISTE CAMPERVAN SITE

This site is surrounded by some of the most precious and protected ground in the British Isles.

Help us keep this part of the Cairngorms National Park as clean as possible by leaving no trace, follow the information signage around the car park, and when you leave, take all rubbish away with you.



For more information on access to the site, terms & conditions, please check out the website at -

www.cairngormmountain.co.uk/campervanpark

or scan the QR code for a direct link.



Glenmore Forest Park is a National Nature Reserve, home to, amongst others, red squirrels, capercaillie, crested tits and wood ants.

The reserve is managed to help protect this rich habitat, and to welcome visitors who want to enjoy it responsibly.

Loch morlich is one of the largest Kettle hole lakes in the area. A kettle hole lake is created when a block of glacier ice becomes separated from the receding glacier, which becomes buried in sediment. As the ice melts, the hollow fills with water and the loch is formed.

The loch morlich beach sand is completely natural and is one of the highest natural beaches in the British Isles. Loch Morlich is surrounded by Scots Pine, which is resident of the wonderful red squirrel along with scottish crossbill, crested tit, amongst others. Over the last few hundred years, much of the timber Glenmore & Rothiemurchus has been felled to be floated down the River Spey to the coast where the timber was built into many ships.



CISTE RIDGE FOOTPATH



Before & after path pitching construction
(2013 / 2014)

Path verge reinstatement work using grass seed,
fertiliser & Seed-aide mulch (2018)

The lower section of the Ciste Ridge footpath has undergone repairs work over several years. The initial repairs were carried out by trainees and contractors funded by the Cairngorms Mountain Heritage project.

"The training scheme was a ground-breaking step in developing a professional path-building workforce. It taught eight people path work and conservation on an eight-month course leading to the SVQ level 2 qualification in Environmental Conservation".

Information about the project can be found at
www.outdooraccessstrustforscotland.org.uk

The land owner, Highlands & Islands Enterprise have spent nearly 2 million pounds in path repairs over the Cairngorm estate in the last three decades. They continue to fund & support path repairs and maintenance projects within the estate boundary.

Cairn Gorm (An Carn Gorm, the blue hill) is the U.K's 6th Highest mountain, standing at 4084ft / 1245m above sea level.

The most popular route up Cairn Gorm is starting in the Coire Cas Car Park and following the Windy Ridge path. An alternative way is using the Ciste Ridge path in front of you. This route would take a minimum of 4 hours for the return trip.

Higher up, the path does become less defined as it ascends up towards the top station of the Funicular railway, working its way up through the ski area.

Great views are available over Glenmore, across into Coire na Ciste (Hollow of the casket) and Coire Laogh mor (Big hollow of the Cattle) when weather conditions allow.



Please ensure you have adequate navigational equipment and the knowledge how to use them to get you safely on and off the mountains. There are no navigational markers or assistance beyond this point.

Please ensure you keep your dog on the path with you at all times and do not allow it to chase any wildlife.



COIRE NA CISTE
**VIEW
POINT**



RYVOAN VIEW POINT

Glenmore Forest Park is a National Nature Reserve, home to, amongst others, red squirrels, capercaillie, crested tits and wood ants.

The reserve is managed to help protect this rich habitat, and to welcome visitors who want to enjoy it responsibly.

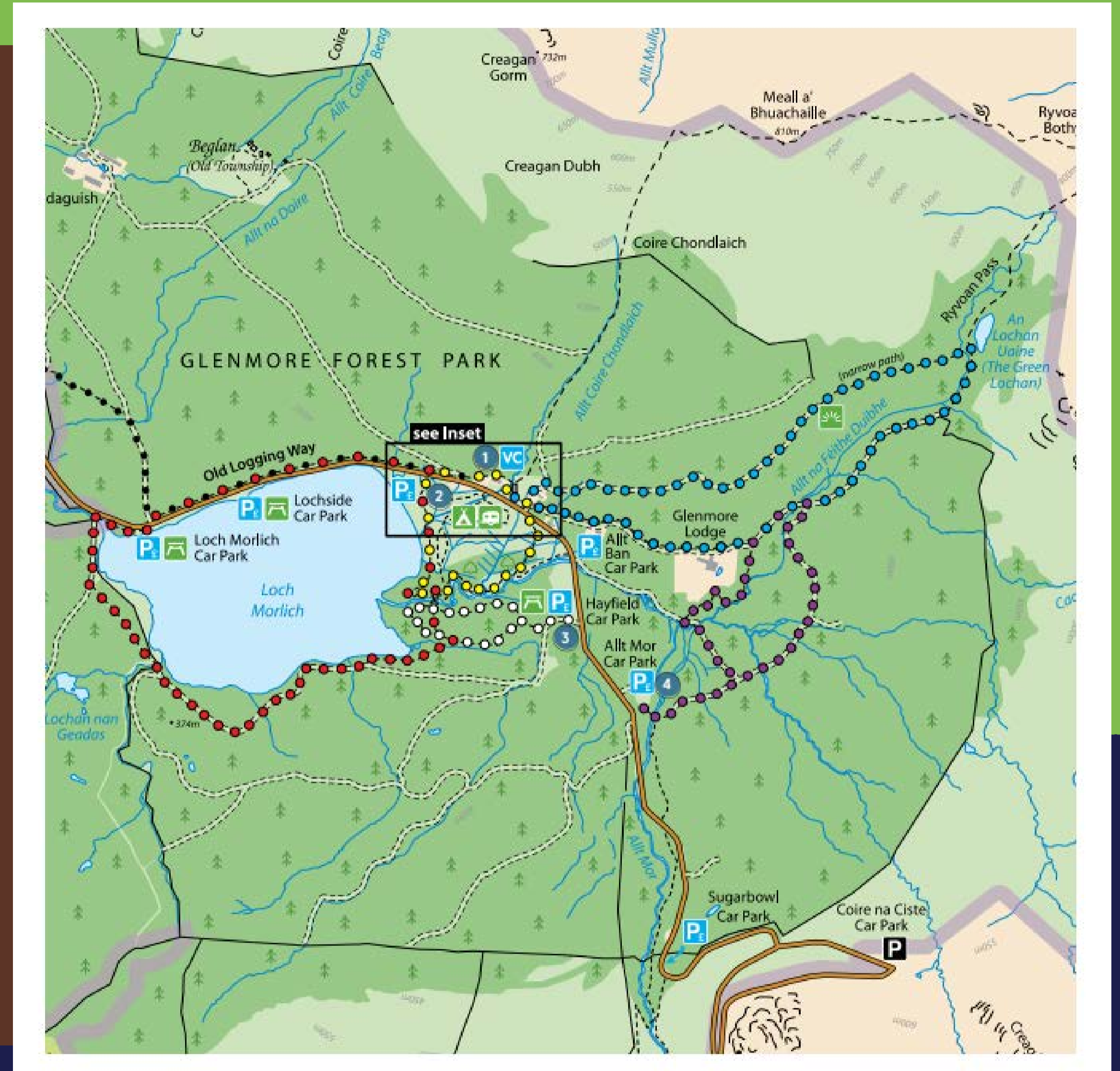
The pass of Ryvoan was created by the power of the huge Spey Valley ice sheet that once covered much of what you see today.

The force of the ice moving, carved out the huge cliffs and as the ice retreated, the 400 million-year-old Schist rock crashed to the valley floor, creating the huge scree fields which are partly covered by trees now.



If you visit Glenmore, you can walk up towards Ryvoan bothy and An Lochain Uaine following the blue and purple routes on the Glenmore Forest Park map. This walk will take approx. 2.5 hours from the Allt Mor car park near the bottom of the ski road.

Ryvoan Pass - Ruighe a' Bhothain - means 'the slope of the bothy', which is visible if you walk through the pass.





WASTE DISPOSAL POINT



**GLENMORE
VIEW
POINT**



**RYVOAN
VIEW
POINT**

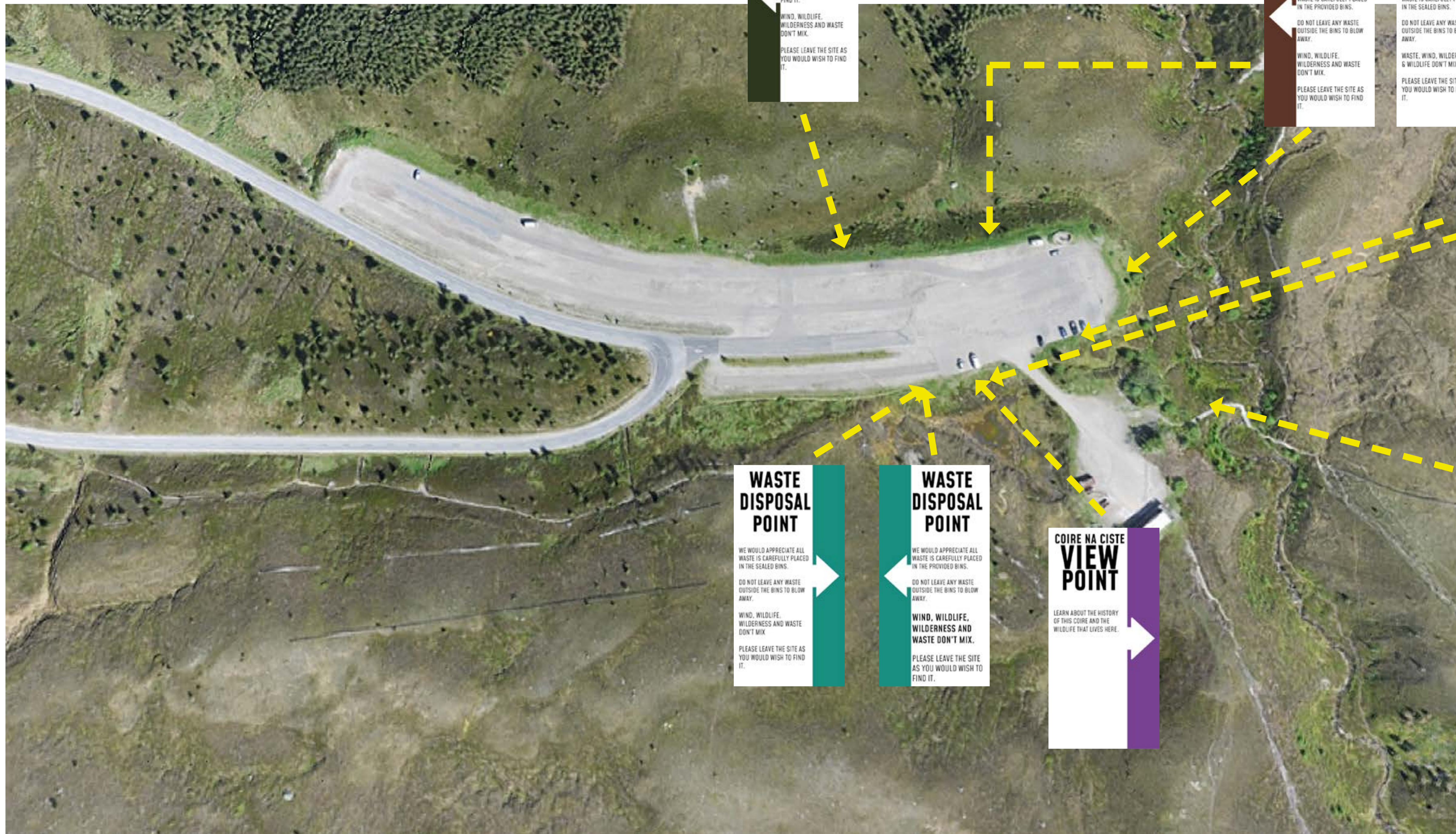
**WASTE
DISPOSAL
POINT**

**CISTE
RIDGE
FOOTPATH**

**COIRE NA CISTE
VIEW
POINT**

LOCATIONS OF VIEWPOINT SIGNAGE





GLENMORE VIEW POINT
 ENJOY THE VIEW OF THIS BEAUTIFUL LANDSCAPE WHILE LEAVING IT IN THE WAY YOU WOULD LIKE TO FIND IT.
 WIND, WILDLIFE, WILDERNESS AND WASTE DON'T MIX.
 PLEASE LEAVE THE SITE AS YOU WOULD WISH TO FIND IT.

RYVOAN VIEW POINT
 WE WOULD APPRECIATE ALL WASTE IS CAREFULLY PLACED IN THE PROVIDED BINS.
 DO NOT LEAVE ANY WASTE OUTSIDE THE BINS TO BLOW AWAY.
 WIND, WILDLIFE, WILDERNESS AND WASTE DON'T MIX.
 PLEASE LEAVE THE SITE AS YOU WOULD WISH TO FIND IT.

RYVOAN VIEW POINT
 WE WOULD APPRECIATE ALL WASTE IS CAREFULLY PLACED IN THE SEALED BINS.
 DO NOT LEAVE ANY WASTE OUTSIDE THE BINS TO BLOW AWAY.
 WASTE, WIND, WILDERNESS & WILDLIFE DON'T MIX.
 PLEASE LEAVE THE SITE AS YOU WOULD WISH TO FIND IT.

WASTE DISPOSAL POINT
 WE WOULD APPRECIATE ALL WASTE IS CAREFULLY PLACED IN THE SEALED BINS.
 DO NOT LEAVE ANY WASTE OUTSIDE THE BINS TO BLOW AWAY.
 WIND, WILDLIFE, WILDERNESS AND WASTE DON'T MIX.
 PLEASE LEAVE THE SITE AS YOU WOULD WISH TO FIND IT.

WASTE DISPOSAL POINT
 WE WOULD APPRECIATE ALL WASTE IS CAREFULLY PLACED IN THE PROVIDED BINS.
 DO NOT LEAVE ANY WASTE OUTSIDE THE BINS TO BLOW AWAY.
 WIND, WILDLIFE, WILDERNESS AND WASTE DON'T MIX.
 PLEASE LEAVE THE SITE AS YOU WOULD WISH TO FIND IT.

COIRE NA CISTE VIEW POINT
 LEARN ABOUT THE HISTORY OF THIS COIRE AND THE WILDLIFE THAT LIVES HERE.

CISTE RIDGE FOOTPATH
 THERE IS NO NAVIGATIONAL ASSISTANCE BEYOND THIS POINT.
 PLEASE KEEP YOUR DOG ON THE PATH WITH YOU AT ALL TIMES.
 ENJOY THE MOUNTAINS. BE SAFE & BE RESPONSIBLE.
 LEAVE TO TRACE OF YOUR VISIT.

CISTE RIDGE FOOTPATH
 THERE IS NO NAVIGATIONAL ASSISTANCE BEYOND THIS POINT.
 PLEASE KEEP YOUR DOG ON THE PATH WITH YOU AT ALL TIMES.
 ENJOY THE MOUNTAINS. BE SAFE & BE RESPONSIBLE.
 LEAVE TO TRACE OF YOUR VISIT.

CISTE RIDGE FOOTPATH
 ALTERNATIVE ROUTE TO CAIRN GORM.
 PLEASE ENSURE YOU HAVE ADEQUATE MEANS TO NAVIGATE SAFELY ON AND OFF THE MOUNTAIN.
 ENJOY THE MOUNTAINS. BE SAFE. BE RESPONSIBLE.

LOCATIONS OF DIRECTIONAL SIGNAGE