

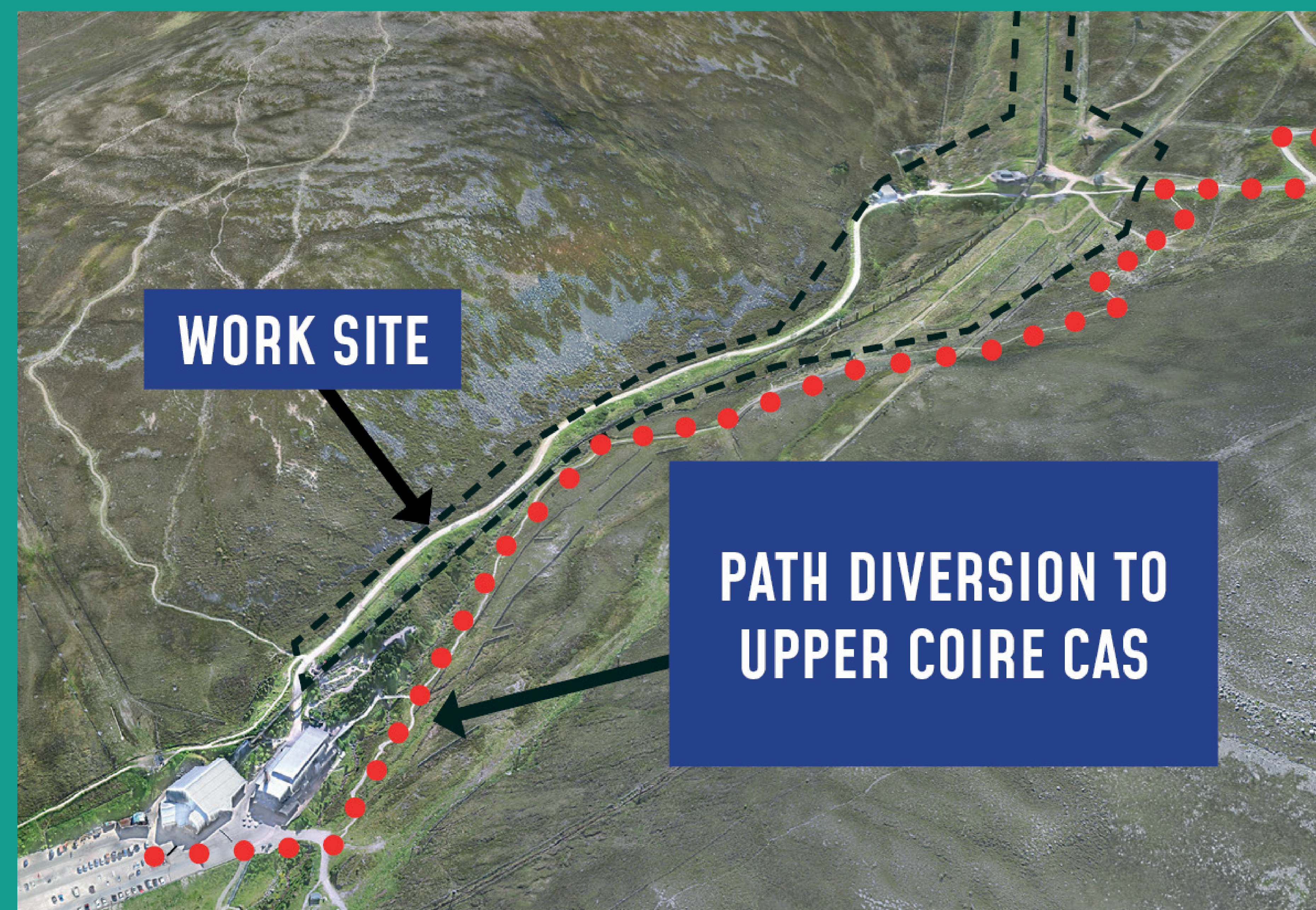
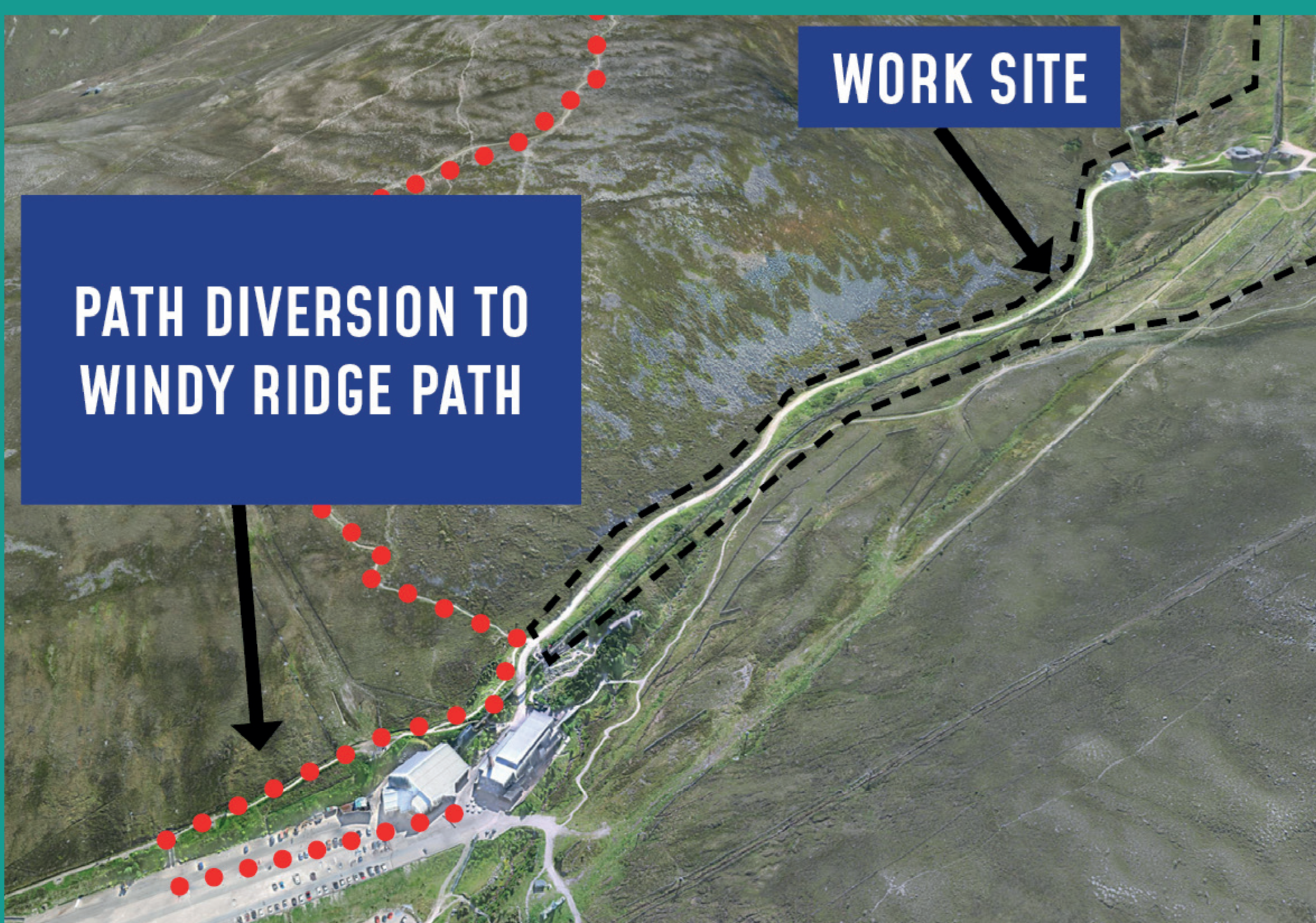


PUBLIC ACCESS DIVERSIONS DURING FUNICULAR REPAIRS.

We kindly ask that all visitors accessing the mountain, follow signed diversion routes and observe all warning signs and barriers, while repair works are being carried out on the funicular railway structure, during the summer & autumn 2021.

Access to paths within Coire Cas including the Fiacail path to 1141m, upper hill track and the mountain garden.

Please use the lower Coire Cas trail rejoining the hill track above the middle station.



Access the Windy Ridge path

Please use central staircase half way down car park and walk along the all abilities trail.